

BIKING ROUTES

around Riva Bella

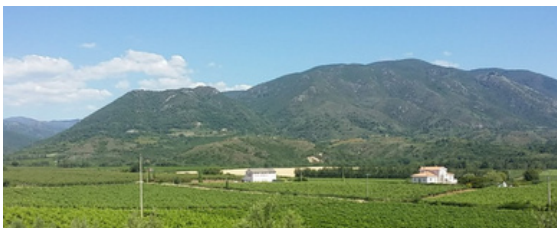
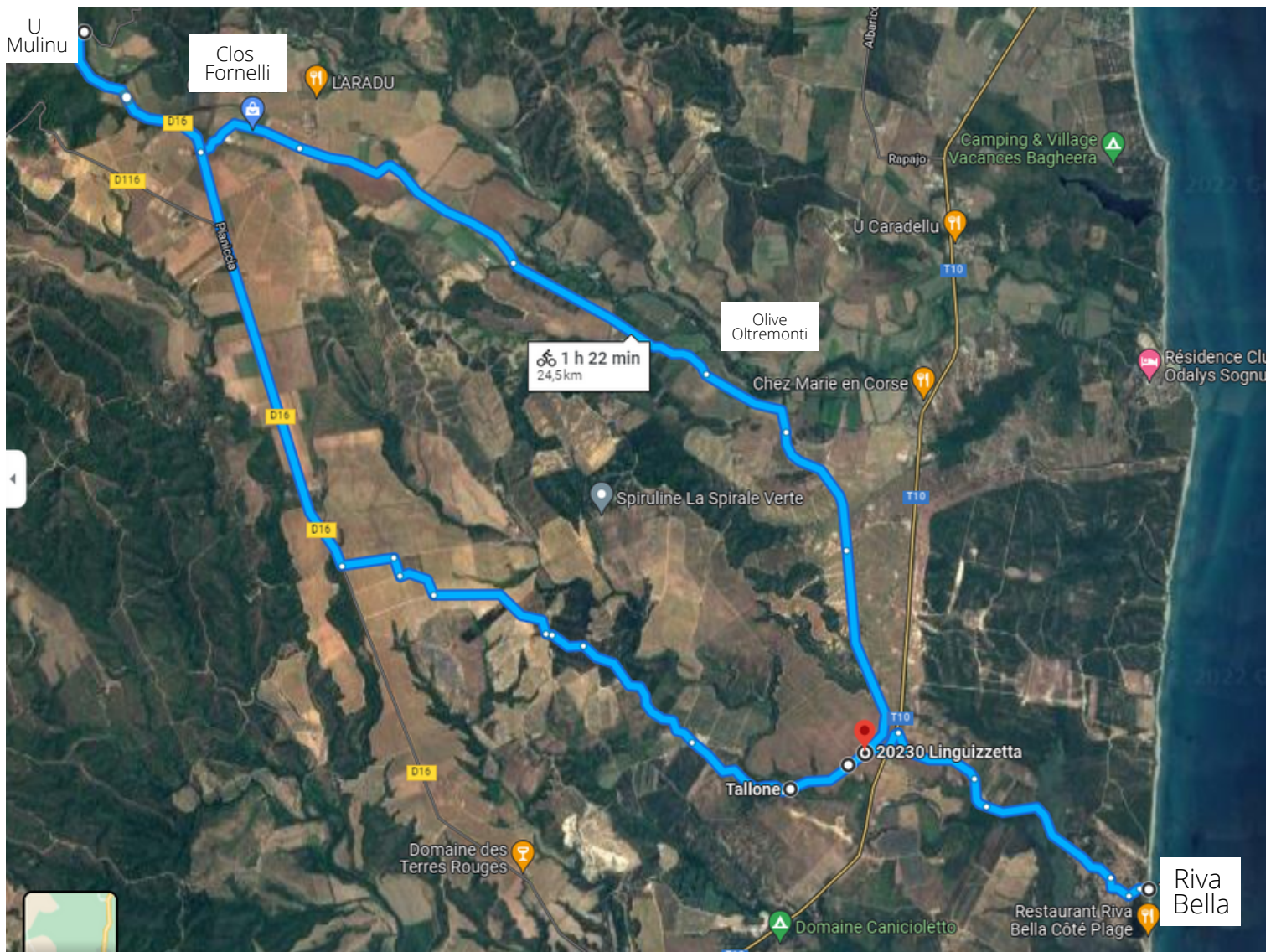


1) Pianiccia Loop - U Mulinu natural pool *Between orchards and vineyards*

25 kms | Height difference : 140 meters | Medium | From Riva Bella

A nice walk around Riva Bella. Once, at the intersection of Riva Bella, take on the left toward Aléria. At 100 m, on your right, after the electric post  take the path which goes in the maquis.

Go to the left and see the hamlet Pianiccia. At the turn of the Fornelli clos, you can continue towards Tallone and reach the bathing site U Mulinu, old inn. On the way back, you will go along the wine estates, the olive groves, the clementine and grapefruit orchards.

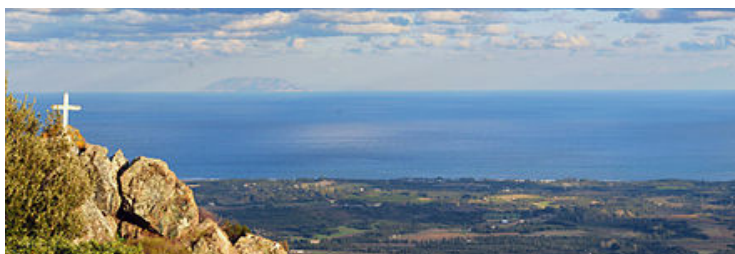
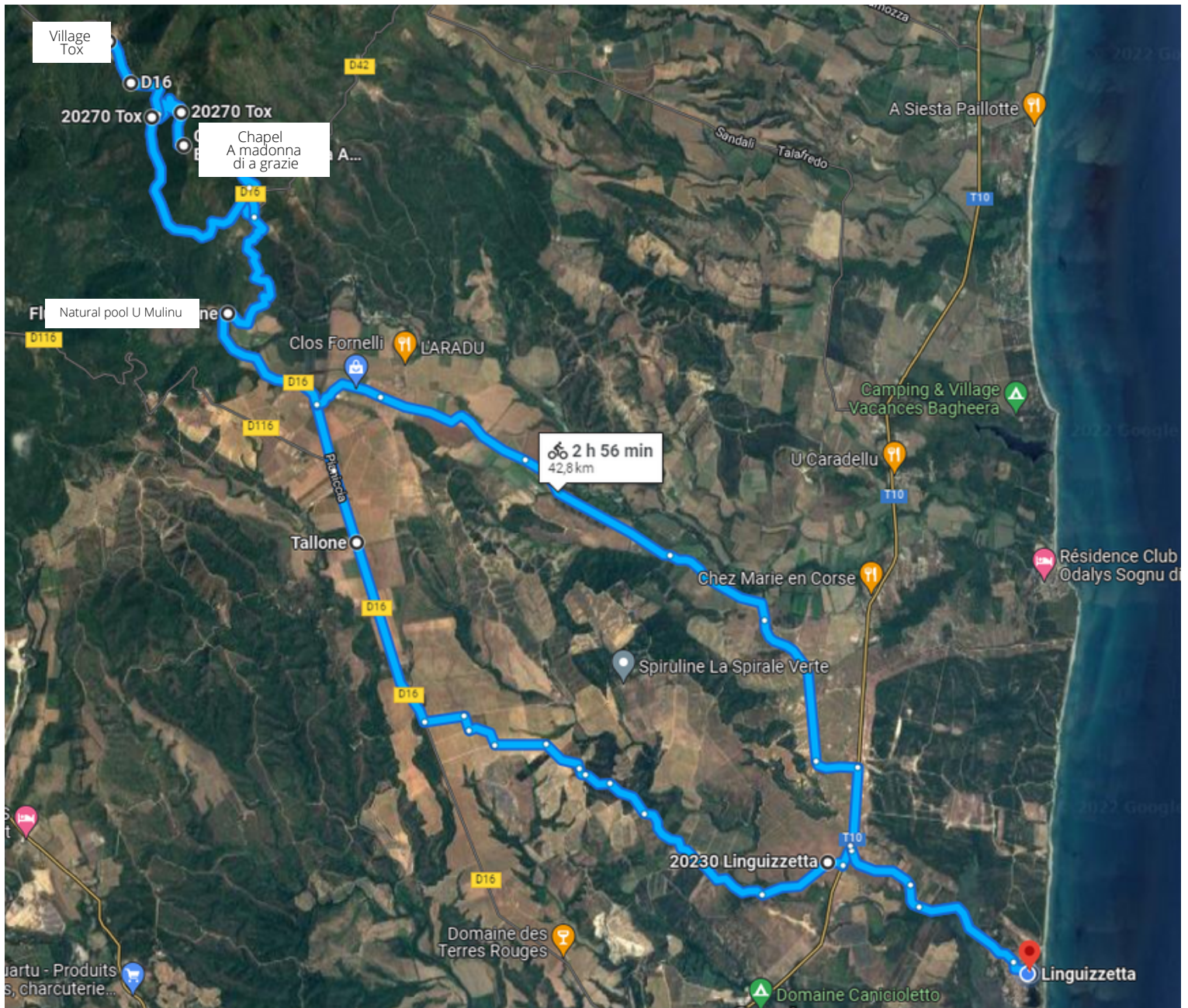


2) Cappella A Madonna di e Grazie - Tox *Discovery of the Authentic Corsica*

42 kms | Height difference : 400 meters | Hard | From Riva Bella


The walk starts in the same way as route 1) and continues after U Mulinu towards Tallone. The most difficult section is the climb to the village of Tox. Before reaching the village, make a diversion to the chapel Capella A Madonna di a grazie from where you will discover one of the most beautiful viewpoints on the whole plain as well as a breathtaking panorama on the Corsican peaks and the villages of the valley: Zalana, Pianello, Campi, Moita, etc. Near the chapel you will find a water point and a picnic table.

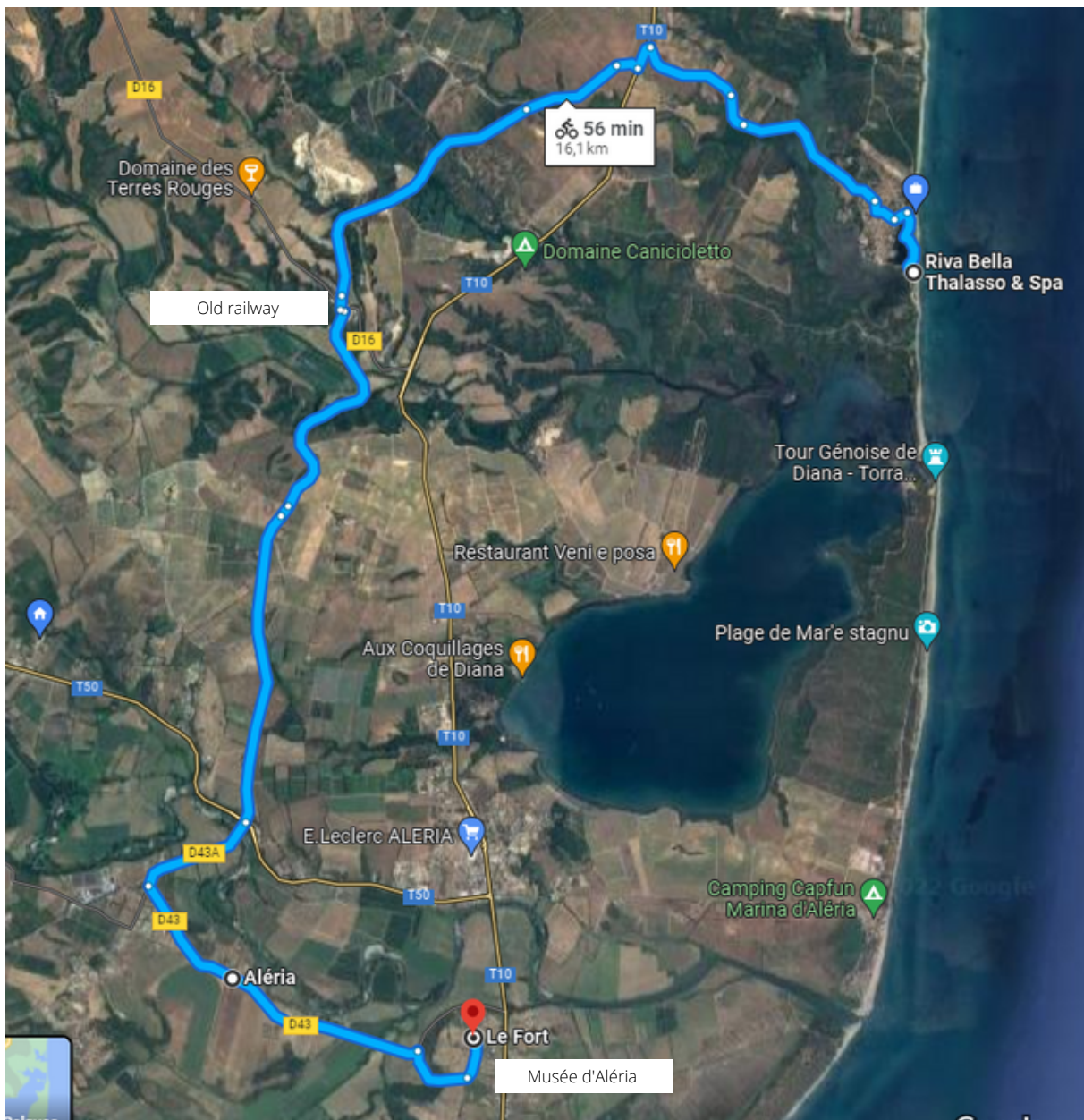
Tox is a small traditional village, you won't find many points of interest but you will discover a rural and authentic Corsica.



3) The Roman Aleria *In the footsteps of the Romans*


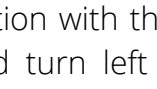
30 kms | Height difference : 40 meters | Easy | From Riva Bella

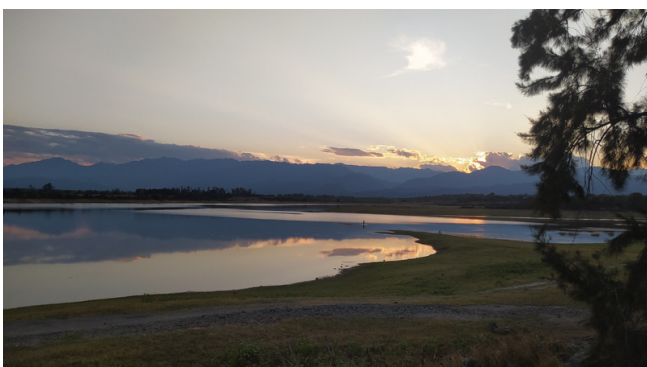
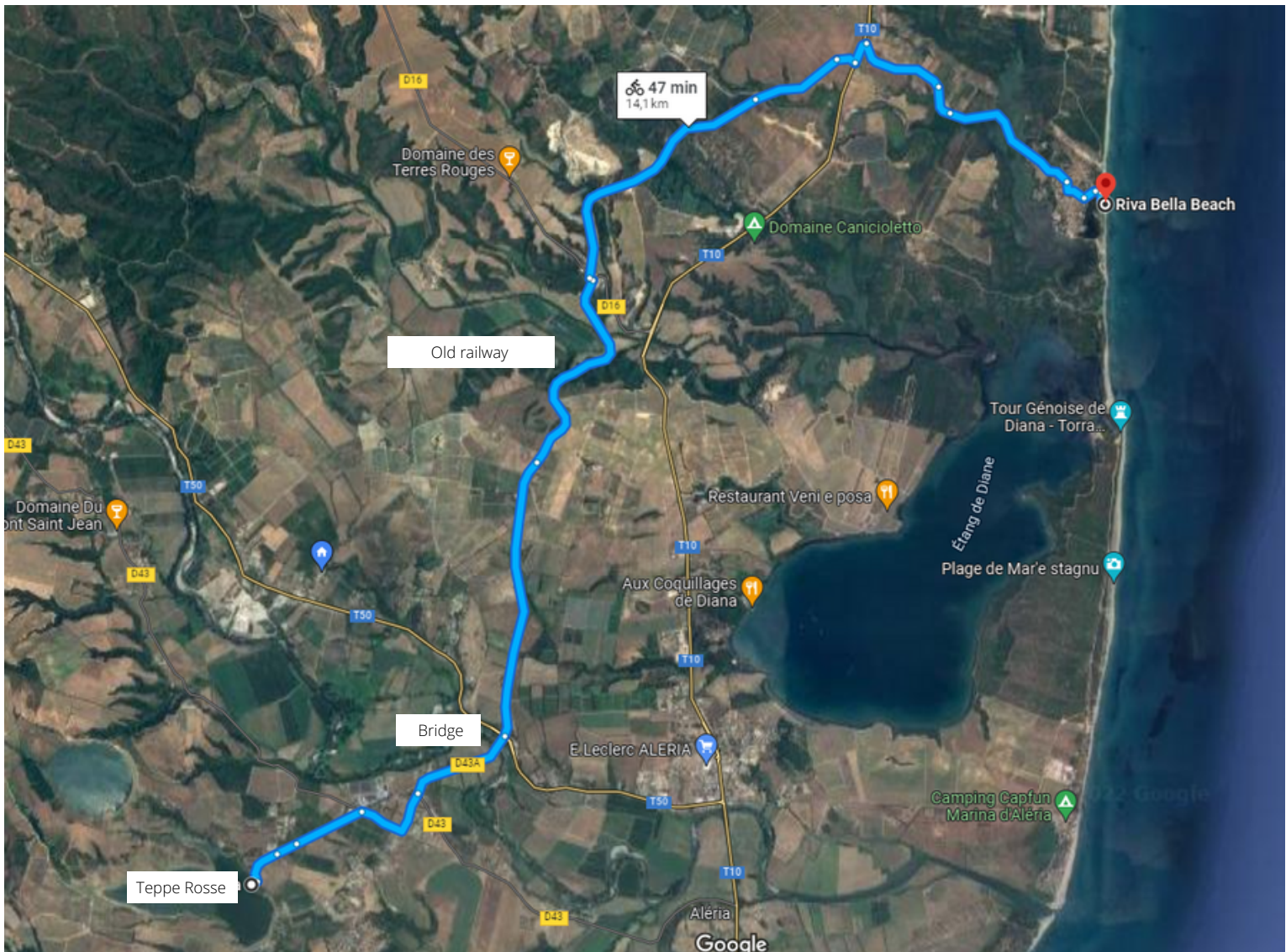
Once at the Riva Bella intersection, turn left towards Aléria. After 100 m, on your right, after the electric post,  take the path that goes into the scrub. Follow the direction of Aléria. The path leads to a road. This is the old railway line that linked Porto Vecchio to Poggio Mezzana. Once you reach the junction with the road that goes to Corte, continue straight on and cross the bridge. You will reach the fort of Aléria by the back country. Once in the old Aléria, where the ancient Roman capital was, you can visit the museum which traces the history of the town and of Corsica under the various occupations. You will also find the church, a souvenir shop and restaurants/snacks. The return journey is either by the same route as the outward journey or by the T10 which is quite dangerous and of little interest.



4) Teppe Rosse *A mirror over the mountains*

30 kms | Height difference : 40 meters | Easy | From Riva Bella

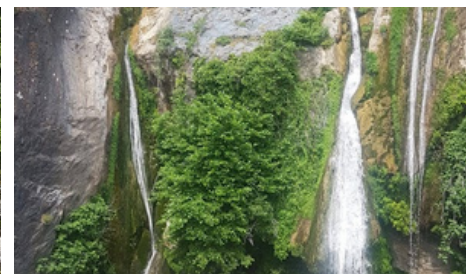
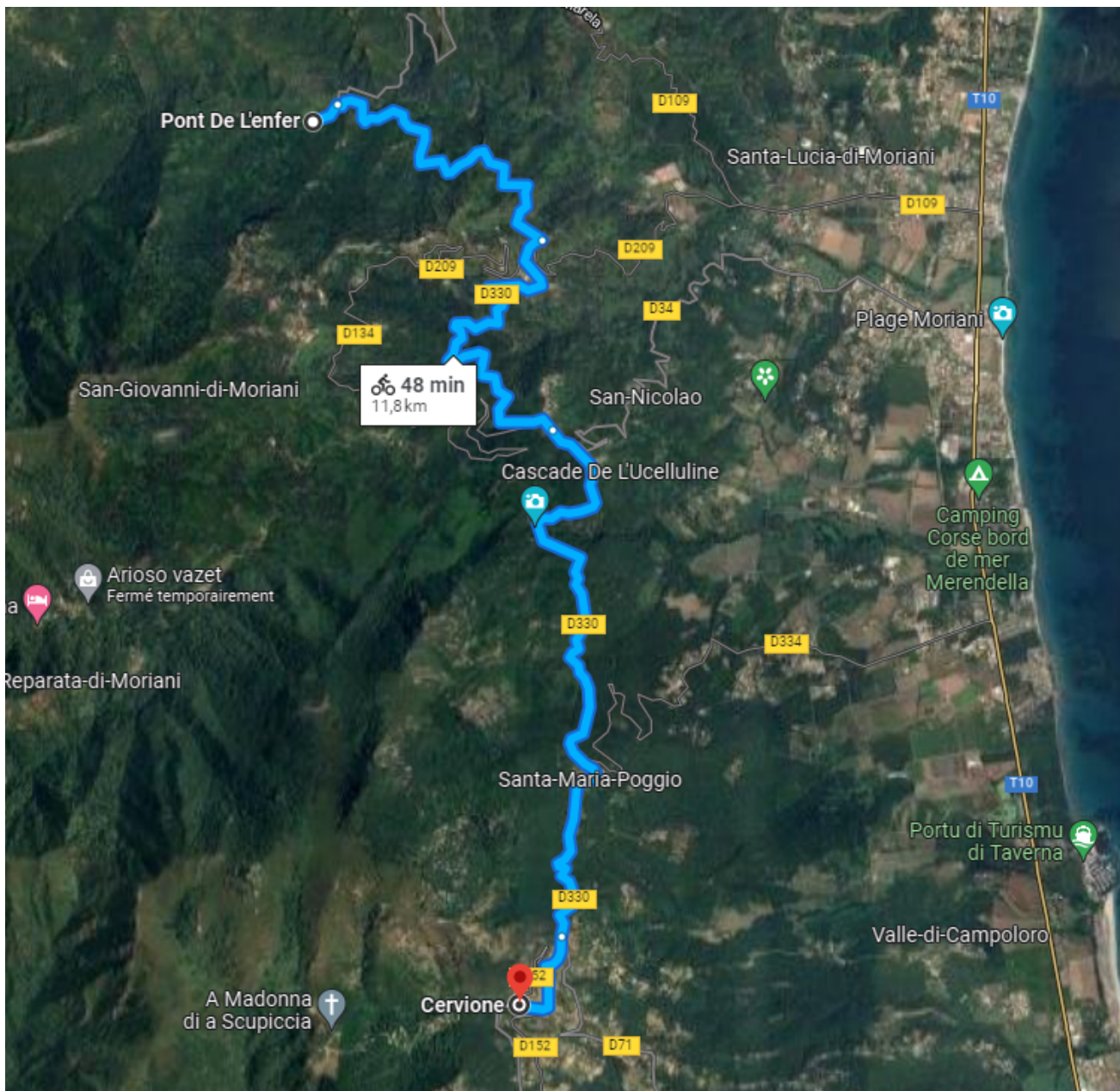
Once at the Riva Bella ball, turn left towards Aléria. After 100 m, on your right, after the electric post, take the path that  goes into the scrub. Follow the direction of Aléria. The path leads to a road. This is the  old railway line that linked Porto Vecchio to Poggio Mezzana. Once you reach the junction with the road that goes towards Corte, go straight on and cross the bridge. Go straight on and turn left opposite the Corstyrène company, follow the small road to arrive opposite the Teppe Rosse reservoir, an artificial lake which irrigates all the agricultural land during the summer months in Corsica. The place is unusual and relaxing, far from the tourist trails. To go back, take the road that leads to the reservoir, unless you opt for the territorial road (dangerous and less pretty).



5) Cervione - Ucelluline - Pont de l'Enfer *Along the waterfalls of Castagniccia*

22 kms | Height difference : 250 meters | Medium | From Cervione

Start the walk in the historic centre of Cervione to soak up the traditional atmosphere of the villages: ethnographic museum, restaurant, viewpoint. Leave for San Nicolao. The road is quite busy in summer but still very pleasant. On the way, stop at the bridge to observe the sumptuous Ucelluline waterfall on your left. If you climb up to the edge of the waterfall (be careful, it can be slippery), you will be able to reach some lovely natural pools. Continue towards Venzolasca, then take the (winding) road that will take you to the Pont de l'Enfer located in the municipality of Velone Orneto. At the bridge, follow the small path along the river. You will find beautiful natural pools and a restaurant nearby. The footpath continues to Fiuminale Sottano, an abandoned village with a splendid view over the valley. The return journey takes the same route as the first.

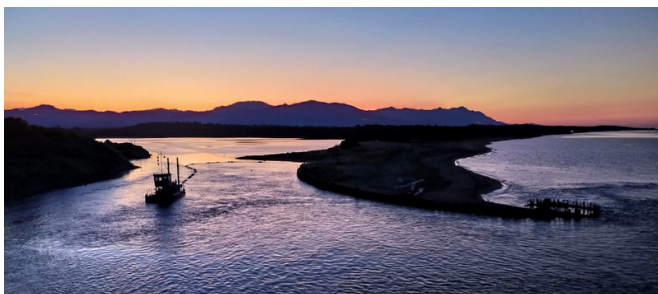
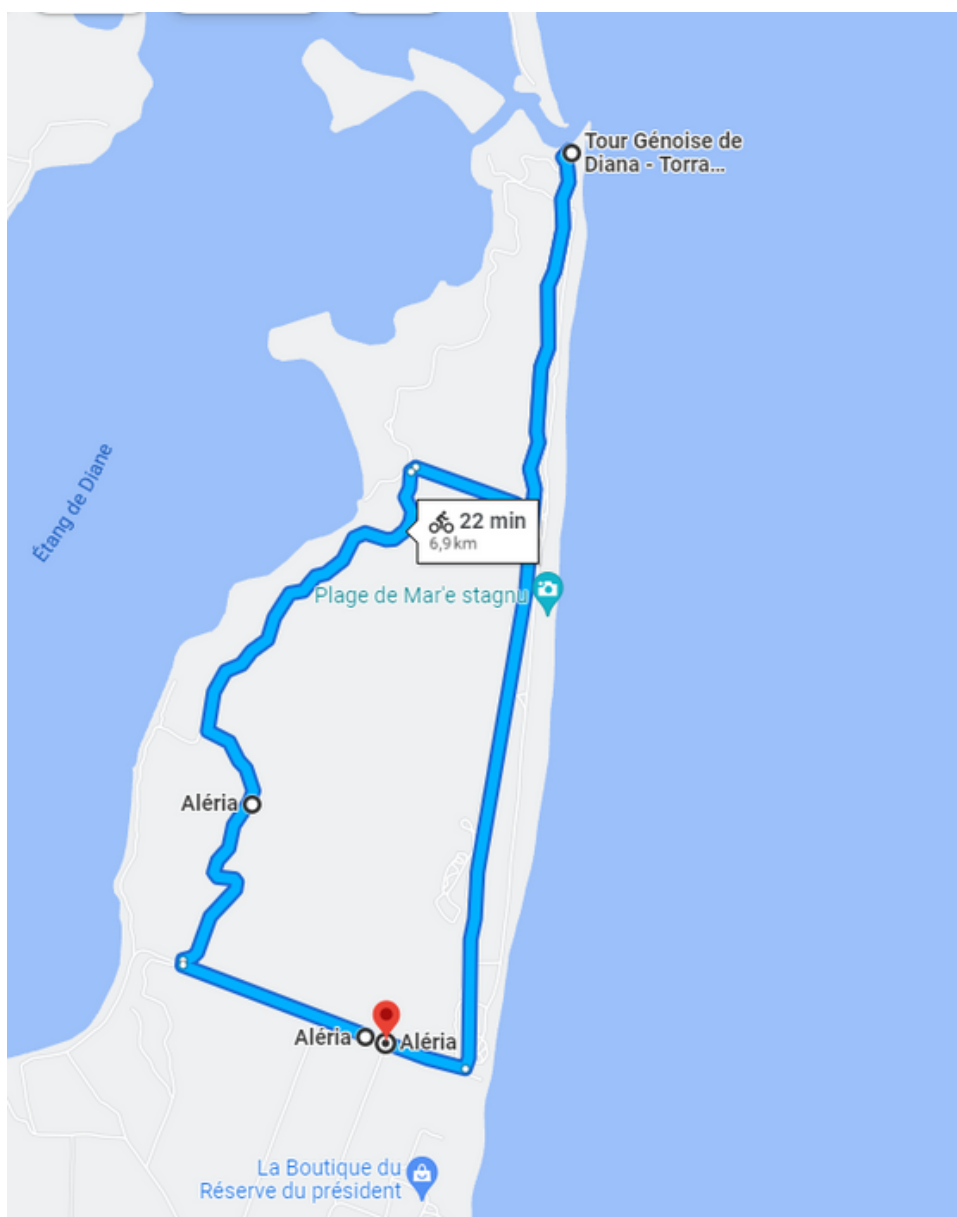


6) Mare Stagnu *In the heart of the maquis, between pond and sea*

7 kms | Height difference : 40 meters | Easy | From the carpark Mare Stagnu


You can start the walk but ideally, to avoid the T10, it is advisable to go directly to the Mare Stagnu car park. To do this, take the sea road to Aléria and turn left onto the small road near the cooperative of the Président reserve. Go straight on until you reach a small car park.

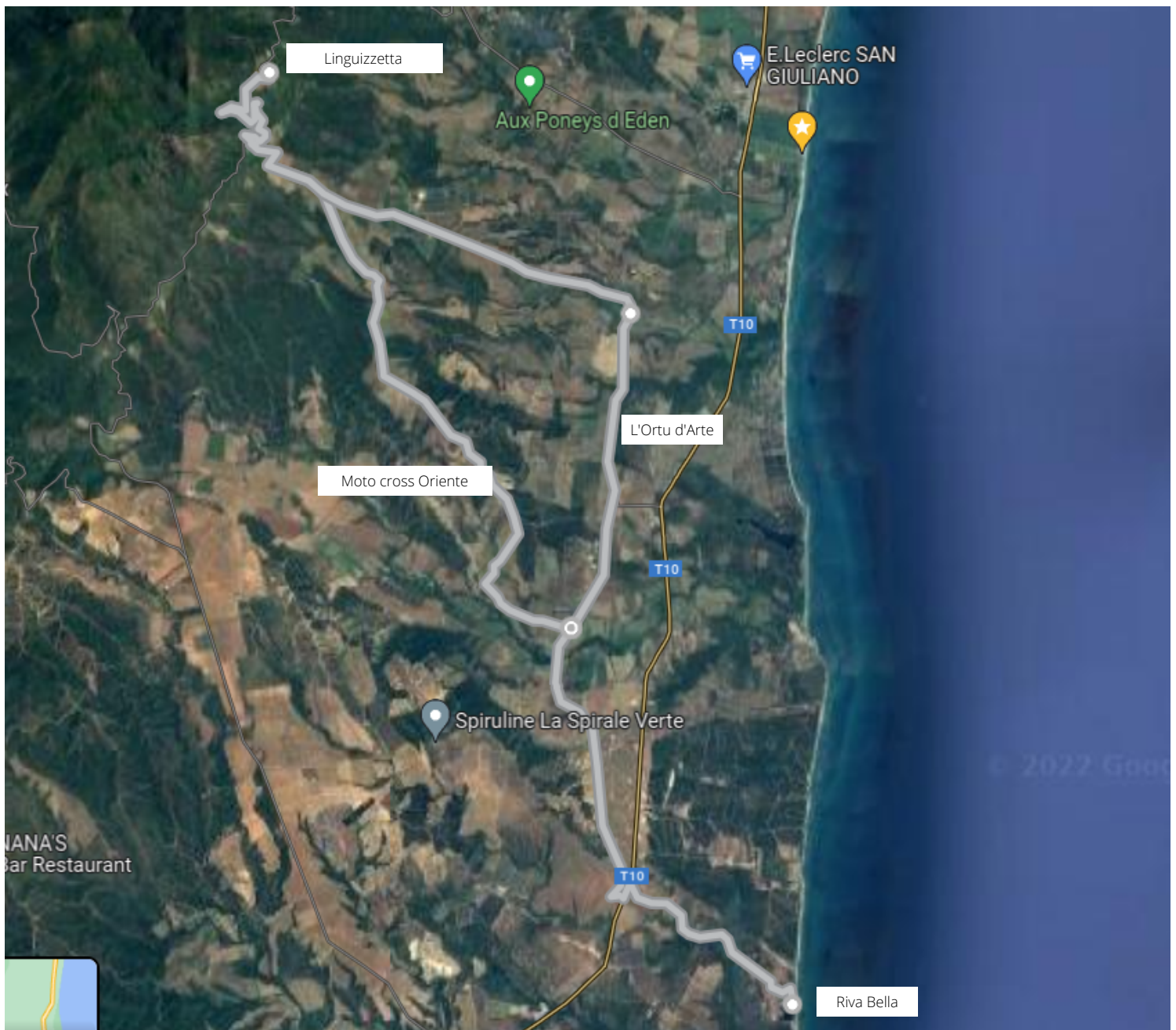
By bike, you will ride along the vineyards and then go to the right into the maquis. The path winds its way along the edge of the pond and offers beautiful views of the mountains, the sea and the surrounding vegetation. You can make a small diversions to discover the mouth of the Etang de Diane and the Genoese tower built in 1582. These towers were used to protect Corsica from invasions. In the event of an attack, the guards were responsible for warning the allies by means of a fire placed at the top of the tower. The alert was then passed from tower to tower, each one lighting a fire in turn to warn the next. Take the path along the sea to return to the starting car park.



7) Linguizzetta *Discovering a traditional Corsican village*

31 kms | Height difference : 375 meters | Difficult | From Riva Bella

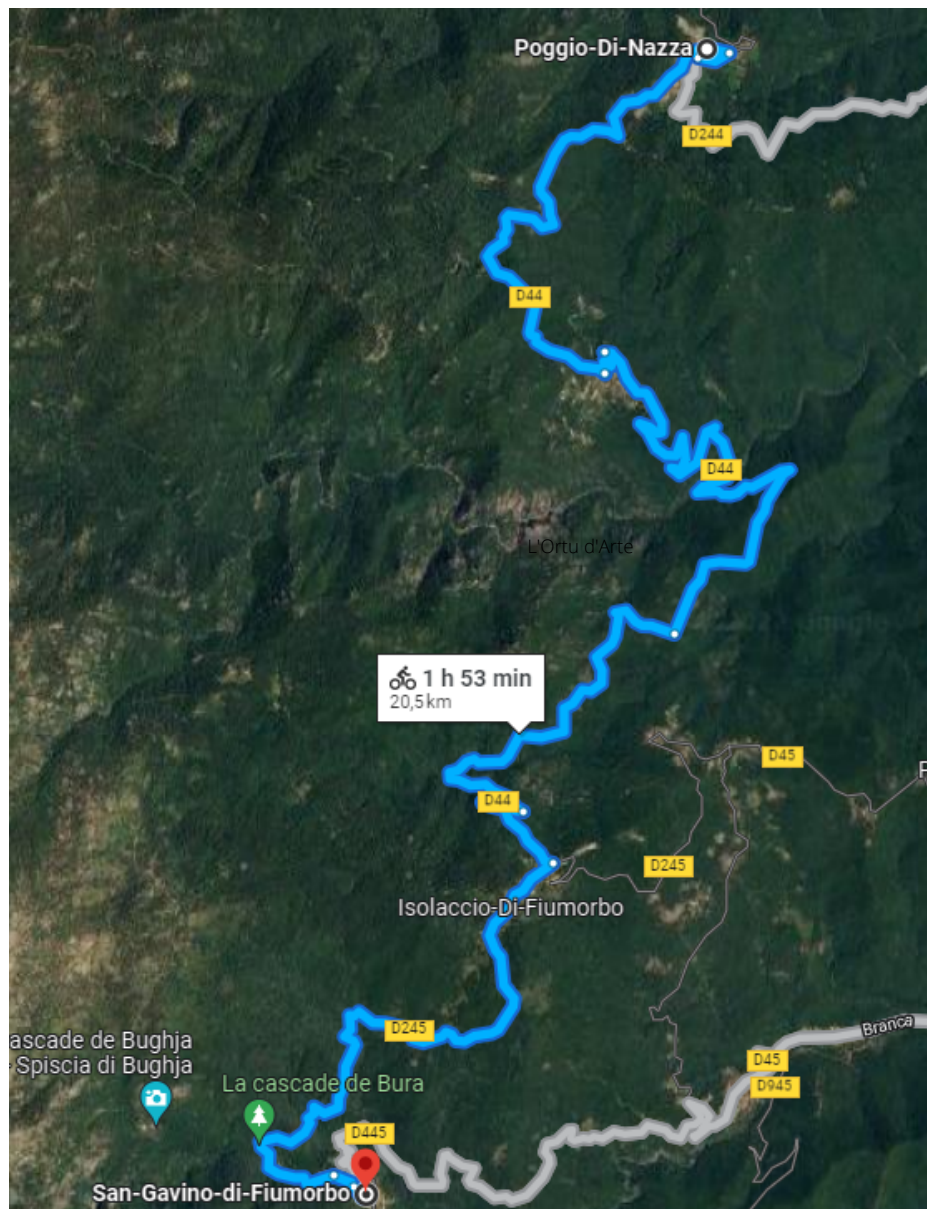
Once at the Riva Bella ball, turn left towards Aléria. After 100 m, on your right, after the electric post, take the path that goes into the scrub.  Follow the direction of Alistro (on the right at the crossroads). Go towards Linguizzetta along the country roads. You will pass the moto club de l'oriente, continue towards the mountains and after a few bends you will reach the village of Linguizzetta, with its traditional stone houses, its church, and enjoy the view over the eastern plain and Riva Bella! The return journey can be made via the places known as Terra Rossa and Talafredo. You will pass close to the Ortu d'Arte, a garden where unusual works of art made of recycled material are exhibited. Finally, come back along the eucalyptus road to the Oltremonti mill and then return along the country path at the Riva Bella intersection.



8) From Poggio di Nazza to San Gavino *Natural pools of the Fiumorbu*

48 kms | Height difference : 600 meters | Hard | From Poggio di Nazza

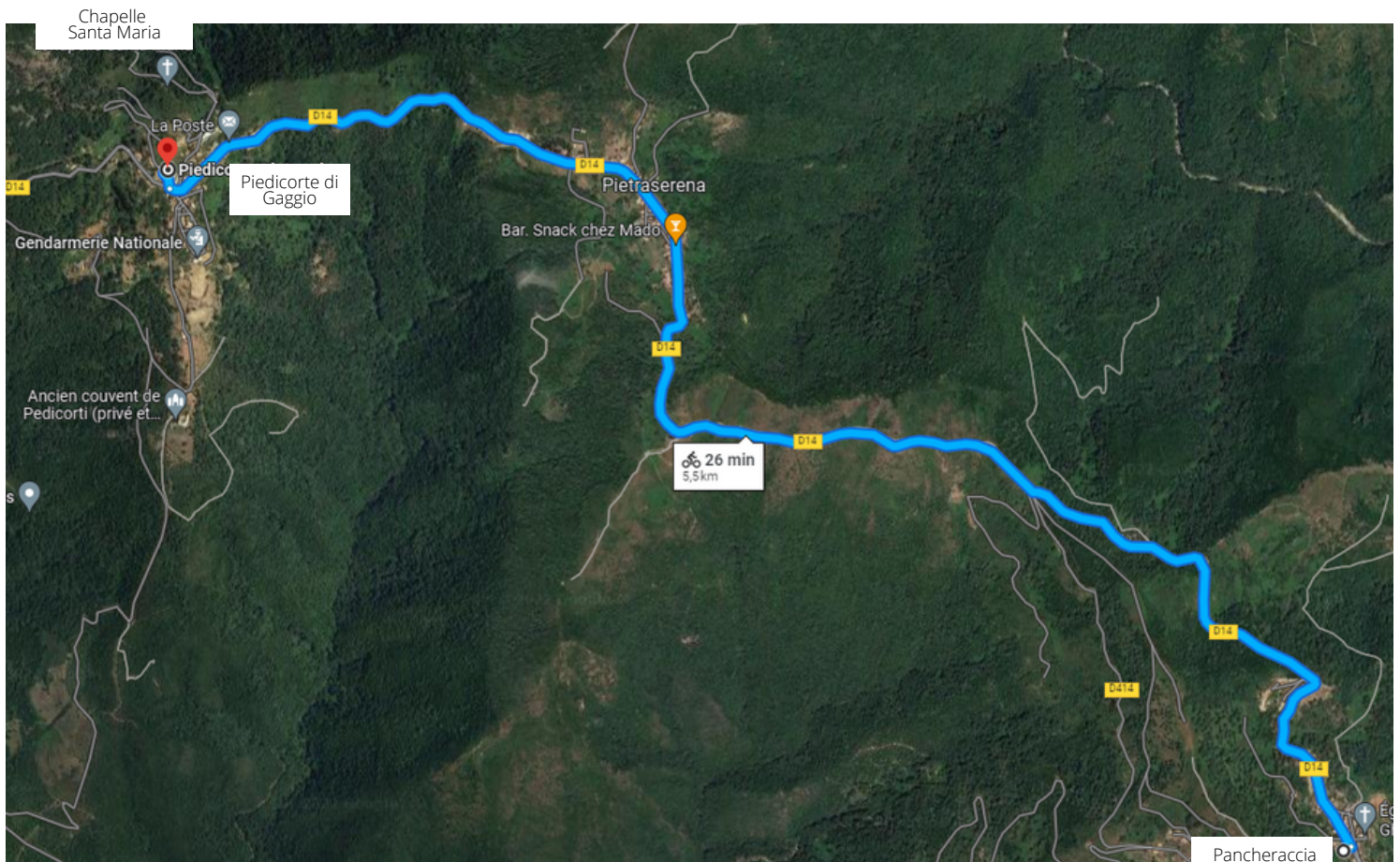
Park in the village of Poggio di Nazza, one of the many authentic villages in the area. There is a drinking water fountain in the village. Drive towards San Gavino. The road descends to a bridge. As you go down to the bridge, you will discover a preserved natural bathing area. Continue towards Ajola, then on the next descent enjoy again a bathing area by the river. Continue towards Isolaccio di Fiumorbu, and pass the start of the walk to the Cascade Buja, a very pretty waterfall with a beautiful natural pool at its foot. It takes 30 to 45 minutes to reach the waterfall from the road. The path is short but very steep. Your itinerary continues towards San Gavino di Fiumorbu, a small village on the hillside.



9) De Pancheraccia à Piedicorte di Gaggio *Escapade in the Tavignanu valley*

11 kms | Height difference : 160 meters | Easy | From Pancheraccia

Park in the village of Pancheraccia, a place of pilgrimage famous for the Madonna who has taken refuge in the flowered chapel. Pancheraccia offers a beautiful view of the eastern plain that runs to the sea. Follow the road and pass through the village of Pietraserena. Reach the pretty village of Piedicorte di Gaggio. Park the bikes to enjoy the small village, the bar and the little chapel of Santa Maria, a magnificent viewpoint over the surroundings. Return by the same route.



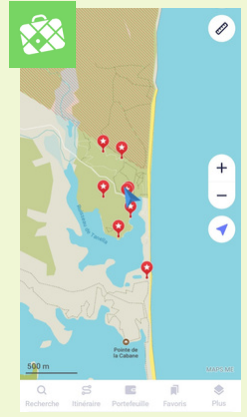
To go further

Here is a non-exhaustive list of other itineraries you can consider by bike:
Cap Corse, Galéria - Calvi, Porto - Piana, escapade in Balagne, etc.

Tips for a successful walk: Maps.me

Maps.me is a free map and offline navigation application that will allow you to follow hiking trails, bike rides, or even your car journeys even without 4G or internet. Useful in Corsica!

To use it, you just need to download the map of Corsica with an internet connection. You can then use it whenever you want.



The best hiking software : Visorando

Visorando is a collaborative website managed by hiking enthusiasts. The aim is to offer the general public the tools to prepare and share their hikes in France and abroad. Find in Corsica more than 200 commented and documented hikes (IGN map) of all types. The platform is available on the online site or on the application.

The good weather plan

Even if Météo France's reputation is well established, the site has a 'Météo Montagne' tab which gives you more precise information on precipitation, wind and snow conditions in the mountainous areas of Corsica.



Parlami Corsu

Small lexicon of the Corsican signposting that you will find during your escapades in Corsica.

This glossary was created by the East Corsica ecotourism association.

POUR INDIQUER VOTRE STRUCTURE D'HÉBERGEMENT :

- **alloghju** (gîte)
- **usteria** (hôtel)
- **campamentu** (camping)

POUR SE DIRIGER VERS UN LIEU :

- **piaghja** (plage)
- **mare** (mer)
- **fiume** (rivière)
- **pozzu** (piscine naturelle)
- **surghjente** (source)

POUR INDIQUER VOTRE ADRESSE :

- **strada** (route)
- **stretta** (ruelle)
- **carrughju** (rue)
- **caminu cecu** (impasse)
- **caminu** (chemin)
- **intrata/escita** (entrée/sortie)

POUR S'ORIENTER À L'INTÉRIEUR DES LOCAUX :

- **cucina** (cuisine)
- **caffè** (bar)
- **càmera** (chambre)
- **scala** (escalier)
- **ascensore** (ascenseur)
- **sala d'attività** (salle d'activité)
- **sala di bagnu - aquaghju** (salle de bain)
- **cabinetti** (toilettes)
- **biblioteca** (bibliothèque)
- **parcaghju** (parking)
- **duscie** (douches)
- **accolta** (accueil)

POUR PAYER :

- **pagamentu pè carta bancaria** (paiement par carte bancaire)
- **pagamentu pè sceccu permessu** (paiement par chèque autorisé)

alloghju

parcaghju
duscie
cucina
mare

Do you have any suggestions or have you discovered new routes?

This guide was created by Valentin, receptionist at Riva Bella. If you have any suggestions or new ideas for itineraries, you can contact me at valentin.durantpro@gmail.com or visit me at the reception. Have a nice trip!